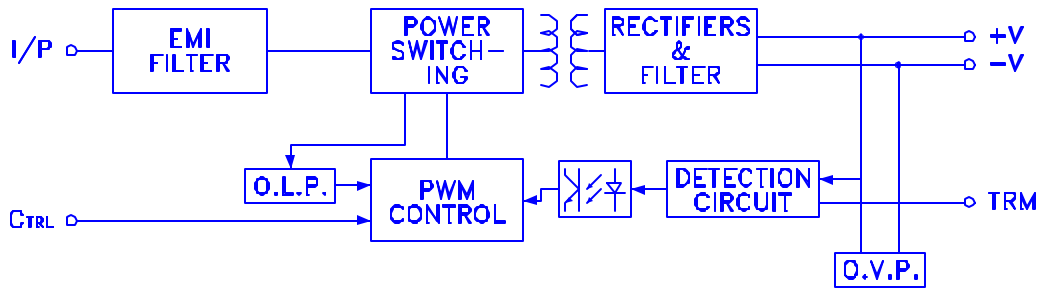


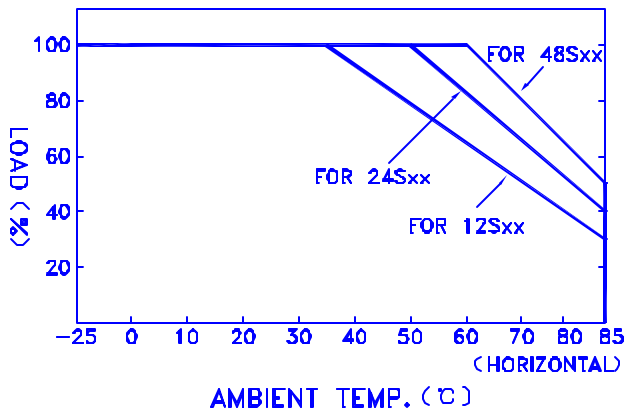


## BLOCK DIAGRAM



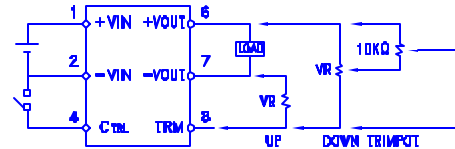
$f_{osc} : 225KHz$

## OUTPUT DERATING



## EXTERNAL OUTPUT TRIMMING

OUTPUT MAY OPTIONALLY BE EXTERNALLY TRIMMED ( $\pm 10\%$ )  
A FIXED RESISTOR OR AN EXTERNAL TRIMPOT AS SHOWN



## ON/OFF CONTROL PIN

CONTROL INPUT.....PIN4  
CONTROL COMMON.....PIN2  
LOGIC COMPATIBILITY.....CMOS OR OPEN COLLECTOR TTL  
CONTROL VOLTAGE  
ON.....+5.5VDC min OR OPEN CIRCUIT  
OFF.....+2.5VDC max. OR SHORT TO PIN2

## DIMENSION (mm)

- ☒ CASE :
- ☒ PIN NO. ASSIGNMENT
  - ☒ PIN 1 : DC INPUT +V
  - ☒ PIN 2 : DC INPUT -V
  - ☒ PIN 3,5 : NO PIN
  - ☒ PIN 4 : CONTROL ON/OFF
  - ☒ PIN 6 : DC OUTPUT +V
  - ☒ PIN 7 : DC OUTPUT -V
  - ☒ PIN 8 : TRIM

