

PKQ75

S E R I E S



50 TO 75 WATT WIDE INPUT DC-DC CONVERTERS SINGLE OUTPUT



Features

- 50-75W Isolated Output
- Efficiency to 90%
- 300KHz Switching Frequency
- 2:1 Input Range
- Regulated Outputs
- Continuous Short Circuit Protection
- Five-Sided Metal Case
- Industry Standard Quarter-Brick Package

MODEL NUMBER	INPUT VOLTAGE	OUTPUT VOLTAGE	OUTPUT CURRENT	INPUT CURRENT NO LOAD	INPUT CURRENT FULL LOAD	% EFF.	CASE
PKQ75-48S18	36-75 VDC	1.8 VDC	0.5 - 25A	50 mA	1116 mA	84	QB
PKQ75-48S25	36-75 VDC	2.5 VDC	0.5 - 25A	50 mA	1514 mA	86	QB
PKQ75-48S33	36-75 VDC	3.3 VDC	0.5 - 20A	50 mA	1563 mA	88	QB
PKQ75-48S05	36-75 VDC	5 VDC	0.5 - 15A	80 mA	1736 mA	90	QB

NOTE: 1. Nominal Input Voltage 48 VDC

Specifications

INPUT SPECIFICATIONS:

Input Voltage Range.....	48V.....	36-75V
Under Voltage Lockout.....	48Vin Power Up.....	34V
	48Vin Power Down.....	32.5V
Positive Logic Remote ON/OFF (See Note 3 & 4)		
Input Filter.....		PI Type

OUTPUT SPECIFICATIONS:

Voltage Accuracy.....		±1.0% max.
Transient Response: 75% - 100% Step Load Change		
Error Band.....		±5% Vout
Recover Time.....		<500us
External Trim Adj. Range.....		±10%
Ripple & Noise, 20MHz BW.....		40mV RMS, max. 100mV pk-pk, max.
Temperature Coefficient.....		± 0.03%/°C
Short Circuit Protection.....		Continuous
Line Regulation ¹		±0.2% max.
Load Regulation ²		±0.2% max.
Over Voltage Protection Trip Range, % Vo Nom.		115-140%
Current Limit.....		110% ~ 140% Nominal Output

GENERAL SPECIFICATIONS:

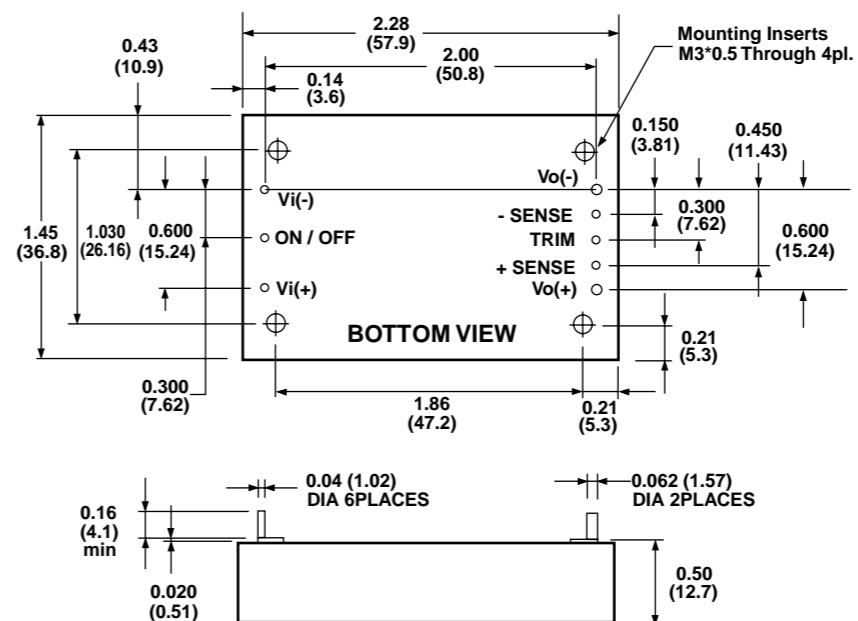
Efficiency.....		See Table
Isolation Voltage.....	Input/Output.....	1500 VDC min.
	Input/Case.....	1500 VDC min.
	Output/Case.....	1500 VDC min.
Isolation Resistance.....		10 ⁷ ohm min.
Switching Frequency.....		300KHz, typ.
Operating Case Temperature.....		-40°C to + 100°C
Storage Temperature.....		-40°C to + 105°C
Thermal Shutdown, Case Temp.		100°C Typ.
Dimensions.....		1.45 x 2.28 x 0.50 inches (36.8 x 57.9 x 12.7 mm)
Case Material.....		Aluminum Baseplate with Plastic Case.

CASE QB

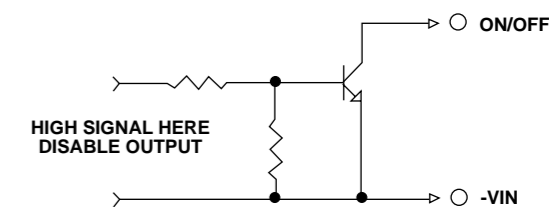
All Dimensions In Inches(mm)
Tolerance .xx= ±0.2, .xxx= ±0.10

NOTE:

1. Measured From High Line to Low Line
2. Measured From Io Min. to Io Max.
3. Logic Compatibility.....Open Collector Ref to - Input
Module ON.....Open Circuit
Module OFF.....< 0.8Vdc
4. Suffix "N" to the Model Number with Negative Logic Remote ON/OFF



Remote ON/OFF Control



External Output Trim

