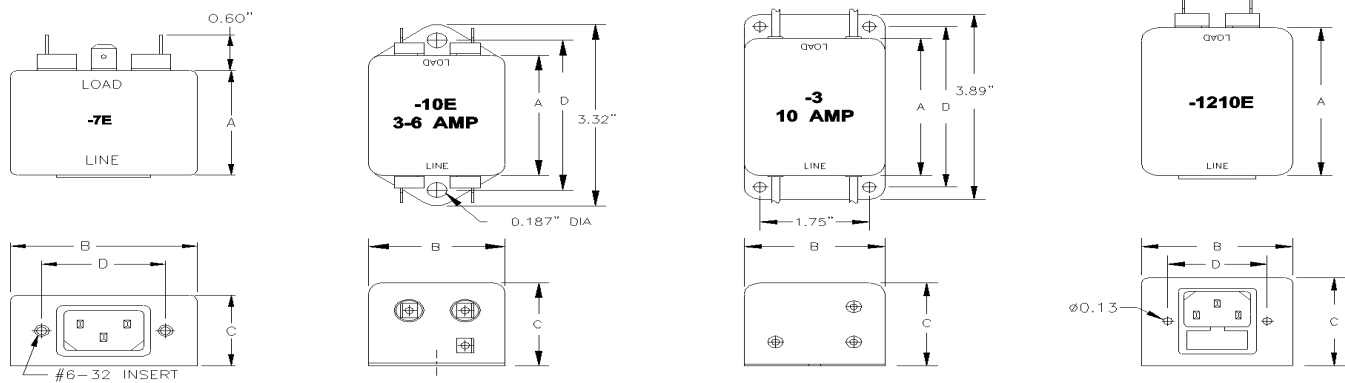


## GENERAL PURPOSE FILTERS, PA SERIES



## FEATURES AND SPECIFICATIONS



### SPECIFICATIONS

#### 1.0 HIGHPOT RATING:

LINE-TO-GROUND: 2000 VAC  
 LINE-TO-LINE: 1750 VDC

#### 2.0 MAXIMUM LEAKAGE CURRENT, EACH LINE TO GROUND.

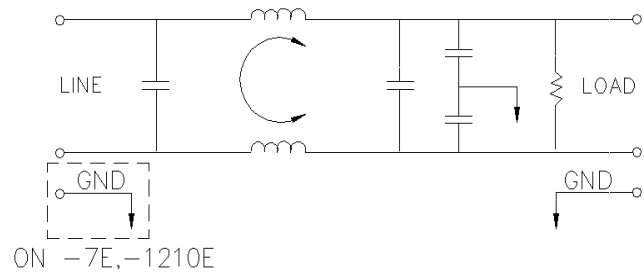
115 VAC, 60 Hz: 0.25 mA MAX  
 250 VAC, 60 Hz: 0.50 mA MAX

#### 3.0 PERFORMANCE

MHz	0.01	0.02	0.05	0.15	0.50	1.00	5.00	10.00	30.00
C/M L/G	10 dB	15 dB	25 dB	30 dB	35 dB	40 dB	50 dB	55 dB	45 dB
D/M L/L	15 dB	20 dB	25 dB	30 dB	42 dB	60 dB	65 dB	60 dB	65 dB

#### 5.0 DIMENSIONS (INCHES)

PART NUMBER	RATED CURRENT	DIMENSIONS (INCHES)			
		A	B	C	D
PA3-3	3A	2.50	2.00	1.50	2.94
PA3-7E	3A	2.50	2.19	1.50	1.57
PA3-10E	3A	2.50	2.00	1.50	2.94
PA3-1210E	3A	2.50	2.00	1.50	1.42
PA5-3	5A	2.50	2.00	1.50	2.94
PA5-7E	5A	2.50	2.19	1.50	1.57
PA5-10E	5A	2.50	2.00	1.50	2.94
PA5-1210E	5A	2.50	2.00	1.50	1.42



#### 4.0 RATED VOLTAGES AND FREQUENCY: 115/250 VAC, 47-63 Hz

PART NUMBER	RATED CURRENT	DIMENSIONS (INCHES)			
		A	B	C	D
PA6-3	6A	2.50	2.00	1.50	2.94
PA6-7E	6A	2.88	2.13	1.50	1.57
PA6-10E	6A	2.50	2.00	1.50	2.94
PA6-1210E	6A	2.88	2.13	1.50	1.42
PA10-3	10A	2.88	2.25	1.50	3.37
+ PA10-6	10A	2.88	2.13	1.50	1.57
PA10-10E	10A	2.88	2.25	1.50	3.37

### APPLICATIONS

- \* SYSTEMS WITH SWITCH MODE POWER SUPPLIES
- \* COMPUTERS
- \* PROCESS CONTROL EQUIPMENT

### FEATURES

- \* FUSED AND UNFUSED CONNECTOR
- \* SPARE FUSE HOLDER
- \* OTHER TERMINATIONS ARE AVAILABLE

+ = VDE