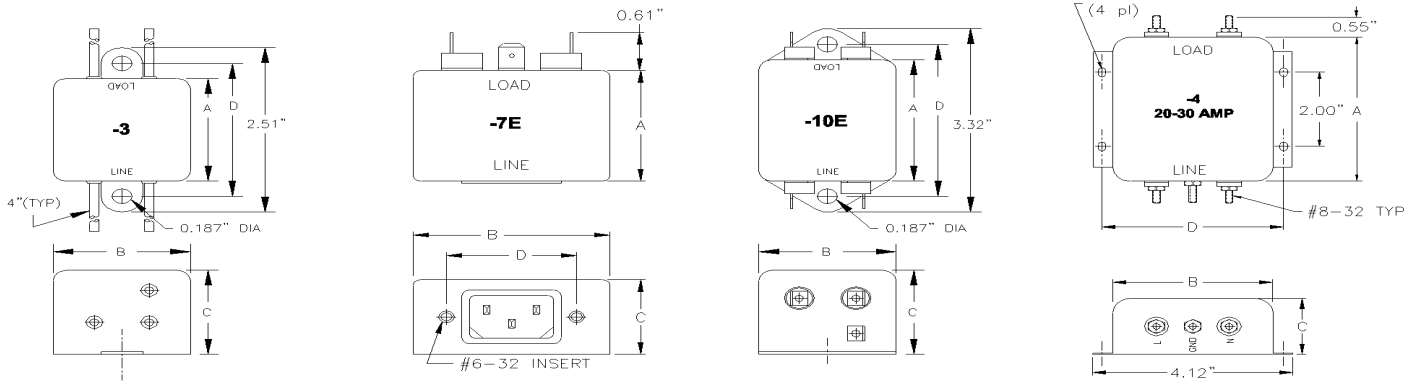




GENERAL PURPOSE FILTERS, G SERIES



FEATURES AND SPECIFICATIONS



SPECIFICATIONS

1.0 HIGHPOT RATING:

LINE-TO-GROUND: 2000 VAC

LINE-TO-LINE: 1750 VDC

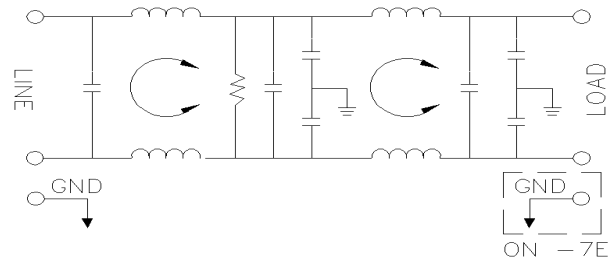
2.0 MAXIMUM LEAKAGE CURRENT, EACH LINE TO GROUND.

115 VAC, 60 Hz: 0.40 mA MAX

250 VAC, 60 Hz: 0.80 mA MAX

3.0 PERFORMANCE

MHz.	0.15	0.20	0.50	1.0	10.0	20.0	30.0
C/M L/G	45 dB	50 dB	65 dB	75 dB	75 dB	75 dB	50 dB
D/M L/L	30 dB	30 dB	60 dB	65 dB	65 dB	40 dB	35 dB



4.0 RATED VOLTAGES AND FREQUENCY: 115/250 VAC, 47-63 Hz

5.0 DIMENSIONS

PART NUMBER	RATED CURRENT	A	B	C	D
G3-3	3A	1.75	1.25	1.00	2.13
G6-3	6A	2.50	2.00	1.50	2.94
G6-7E	6A	2.50	2.19	1.50	1.57
G6-10E	6A	2.50	2.00	1.50	2.94
G10-3	10A	2.50	2.00	1.50	2.94
G10-7E	10A	2.88	2.13	1.50	1.57
G10-10E	10A	2.50	2.00	1.50	2.94
G20-4	20A	3.88	3.31	1.50	3.75
G30-4	30A	3.88	3.31	1.50	3.75

APPLICATIONS

- * HIGH VOLTAGE LINEAR SUPPLIES
- * TEST EQUIPMENT
- * PROCESS CONTROL EQUIPMENT
- * SYSTEMS WITH SWITCHING POWER SUPPLIES
- * SMPS WITH ON-BOARD FILTER
- * TERMINALS

FEATURES

- * LOW COST CM AND DM REJECTION
- * CURRENT RATINGS 3-30 AMPS
- * OTHER TERMINATIONS ARE AVAILABLE.