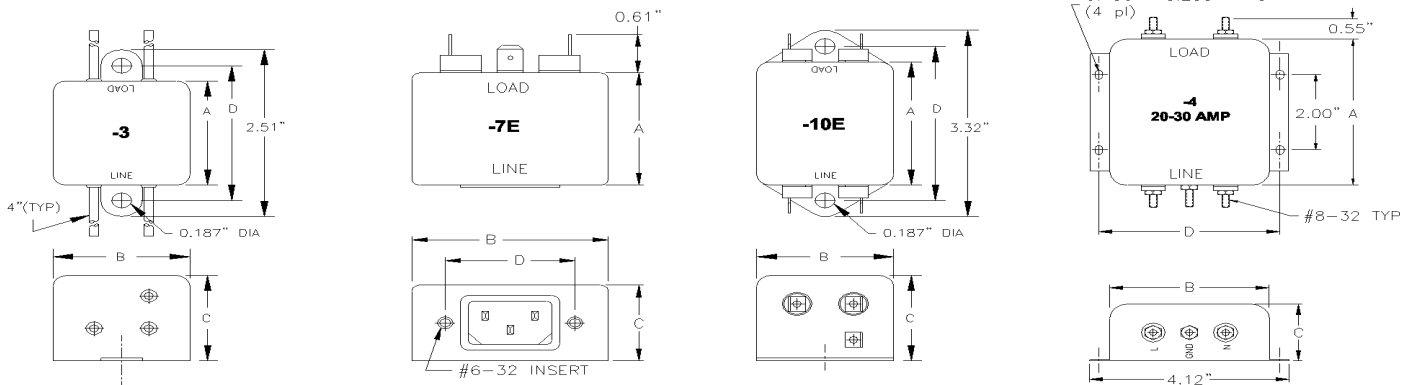




TRI-MAG, Inc.
your POWER Specialists

1601 N. CLANCY CT. • VISALIA, CA 93291
 (559) 651-2222 • FAX (559) 651-0188
<http://www.tri-mag.com>
<http://eemonline.com/tri-mag>
 tri-mag@worldnet.att.net

GENERAL PURPOSE FILTERS, F SERIES



FEATURES AND SPECIFICATIONS



SPECIFICATIONS

1.0 HIGHPOT RATING:

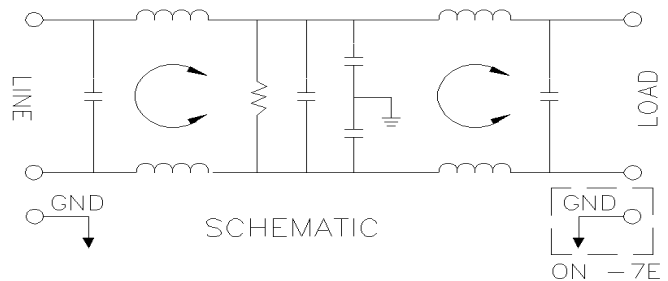
LINE-TO-GROUND: 2000 VAC
 LINE-TO-LINE: 1750 VDC

2.0 MAXIMUM LEAKAGE CURRENT, EACH LINE TO GROUND.

115 VAC, 60 Hz: 0.25 mA MAX
 250 VAC, 60 Hz: 0.50 mA MAX

3.0 PERFORMANCE

MHz.	0.15	0.20	0.50	1.0	10.0	20.0	30.0
C/M L/G	20 dB	25 dB	50 dB	55 dB	65 dB	65 dB	50 dB
D/M L/L	45 dB	50 dB	65 dB	70 dB	70 dB	70 dB	40 dB



4.0 RATED VOLTAGES AND FREQUENCY: 115/250 VAC, 47-63 Hz

5.0 DIMENSIONS

PART NUMBER	RATED CURRENT	DIMENSIONS (INCHES)			
		A	B	C	D
F3-3	3A	1.75	1.25	1.00	2.13
F6-3	6A	2.50	2.00	1.50	2.94
F6-7E	6A	2.50	2.19	1.50	1.57
F6-10E	6A	2.50	2.00	1.50	2.94
F10-3	10A	2.50	2.00	1.50	2.94
F10-7E	10A	2.88	2.13	1.50	1.57
F10-10E	10A	2.50	2.00	1.50	2.94
F20-4	20A	3.88	3.31	1.50	3.75
F30-4	30A	3.88	3.31	1.50	3.75

APPLICATIONS

- * HIGH VOLTAGE LINEAR SUPPLIES
- * TEST EQUIPMENT
- * PROCESS CONTROL EQUIPMENT
- * SYSTEMS WITH SWITCHING POWER SUPPLIES
- * SMPS WITH ON-BOARD FILTER
- * TERMINALS

FEATURES

- * LOW COST CM AND DM REJECTION
- * CURRENT RATINGS 3-30 AMPS
- * OTHER TERMINATIONS ARE AVAILABLE.