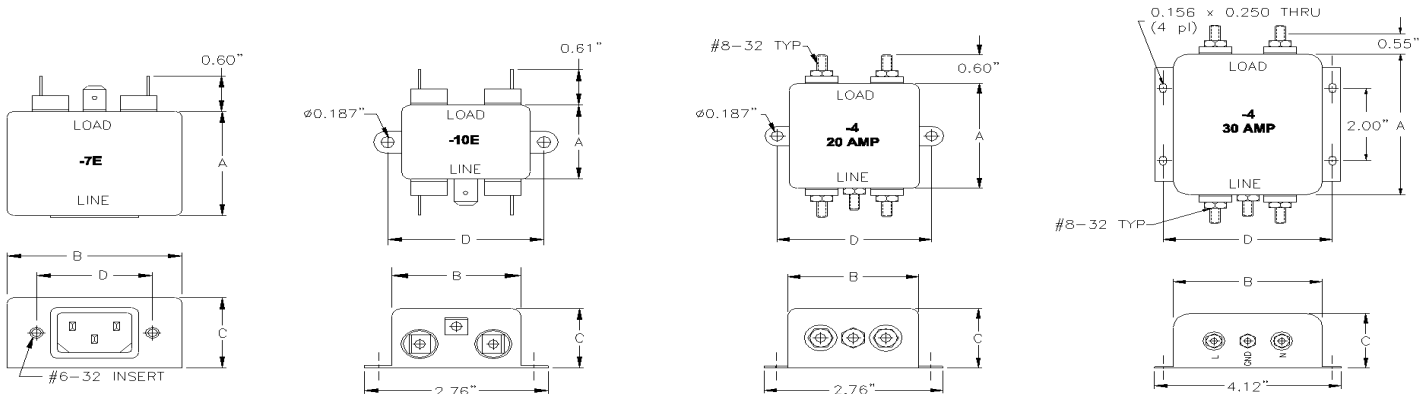




GENERAL PURPOSE FILTERS , B SERIES



FEATURES AND SPECIFICATIONS



SPECIFICATIONS

1.0 HIGHPOT RATING:

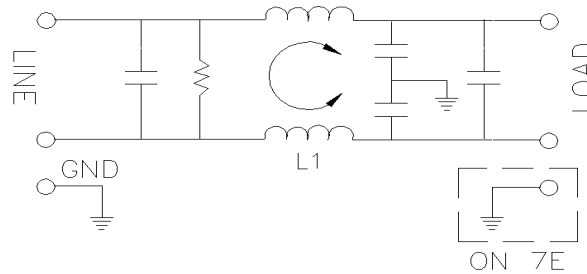
LINE-TO-GROUND: 2000 VAC
 LINE-TO-LINE: 1750 VDC

2.0 MAXIMUM LEAKAGE CURRENT, EACH LINE TO GROUND.

115 VAC, 60 Hz: 0.25 mA MAX
 250 VAC, 60 Hz: 0.50 mA MAX

3.0 PERFORMANCE

MHz	0.15	0.20	0.50	10.0	20.0	30.0
C/M L/G	20 dB	25 dB	35 dB	50 dB	50 dB	50 dB
D/M L/L	10 dB	10 dB	15 dB	50 dB	40 dB	45 dB



4.0 RATED VOLTAGES AND FREQUENCY: 115/250 VAC, 47-63 Hz

5.0 DIMENSIONS (INCHES)

PART NUMBER	RATED CURRENT	DIMENSIONS (INCHES)			
		A	B	C	D
B3-7E	3A	1.75	2.38	1.18	1.57
B3-10E	3A	1.75	2.00	1.12	2.38
B6-10E	6A	1.75	2.00	1.12	2.38
B10-7E	10A	2.19	2.50	1.50	1.57
B10-10E	10A	2.00	2.00	1.13	2.38
B15-10E	15A	2.00	2.50	1.50	2.94
B15-10AE	15A	2.00	2.50	1.50	2.94
B20-4	20A	2.00	2.50	1.50	2.94
B30-4	30A	3.88	3.31	1.50	3.75

APPLICATIONS

- * MICROPROCESSORS
- * DIGITAL TEST EQUIPMENT
- * TRANSIENT SUPPRESSION
- * DATA TERMINALS
- * SMPS WITH ON-BOARD FILTER

FEATURES

- * LOW COST CM REJECTION
- * CURRENT RATINGS 3-30 AMPS
- * OTHER TERMINATIONS ARE AVAILABLE.