

# APC-Q121 Series DC-DC CONVERTER

Quarter Brick size, Single Output 10-25A.

## Outline Product Specification

The APC-Q121 series are industry standard quarter-brick size modules. Comprehensively featured, cost effective and board mountable, these DC-DC converters operate over input voltage ranges of 48V (36 - 75V) and 24V (18V to 36V) and provide precisely regulated single DC output.

The output is fully isolated from the input, allowing versatile polarity configurations and grounding connections. The converters have a maximum output rating of 25 Amps.

The power modules are suited for board level applications in a distributed power architecture requiring isolated power.

Applications include:

- Distributed power architectures
- Industrial applications
- Test & Control equipment
- Telecom / Datacom equipment

### Range Guide

Please contact APC for other non-standard & special output voltages

Model Number	Input Voltage	Output Voltage	Current
APC-Q121-048-033	48V	3.3V	25A
APC-Q121-048-018	48V	1.8V	25A
APC-Q121-048-015	48V	1.5V	25A
APC-Q121-024-033	24V	3.3V	25A
APC-Q121-024-018	24V	1.8V	25A
APC-Q121-024-015	24V	1.5V	25A
APC-Q101-048-033*	48V	3.3V	20A
APC-Q101-048-025	48V	2.5V	20A
APC-Q101-048-020	48V	2.0V	20A
APC-Q101-048-018	48V	1.8V	20A
APC-Q101-048-015	48V	1.5V	20A
APC-Q071-048-065	48V	6.5V	11.5A
APC-Q071-048-050	48V	5.0V	15A
APC-Q071-048-033	48V	3.3V	15A
APC-Q071-048-025	48V	2.5V	15A
APC-Q071-048-020	48V	2.0V	15A
APC-Q071-048-018	48V	1.8V	15A
APC-Q071-048-015	48V	1.5V	15A
APC-Q051-048-050	48V	5.0V	10A
APC-Q051-048-033	48V	3.3V	10A
APC-Q051-048-025	48V	2.5V	10A
APC-Q051-048-018	48V	1.8V	10A
APC-Q051-048-015	48V	1.5V	10A

Please note that both Positive and Negative On/Off logic is available and an option of both standard and short pin lengths are offered (Short pin = ± 0.25mm.) Please state preference when ordering.



APC-Q121 48Vi version

## FEATURES

- ❑ High efficiency: 86-90% typical.
- ❑ Industry standard quarter brick size:
- ❑ Wide input voltage range: 36V to 75V
- ❑ Operating case temperature range: -40°C to 100°C
- ❑ Fixed Frequency
- ❑ Adjustable output voltage 90 -110%
- ❑ Low output noise
- ❑ Metal baseplate
- ❑ 1500Vdc isolation
- ❑ Remote on/off & Remote sense
- ❑ Output overvoltage protection
- ❑ Overtemperature protection
- ❑ Output current monitor voltage
- ❑ Input undervoltage lockout
- ❑ Designed to meet UL60950, EN60950 & CE requirement
- ❑ 48Vi = Base plate construction  
24Vi = Single board format

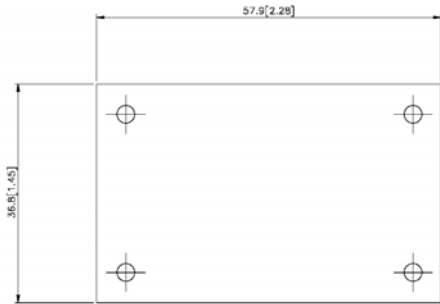


APC-Q121 24Vi version

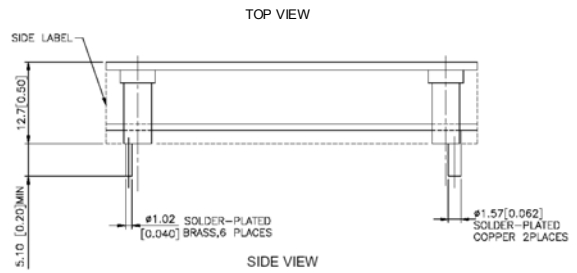
## APC-Q121 Series DC-DC Converter Quarter Brick size, Single Output 10-25A.

### Mechanical Outline 48Vi Base Plate version

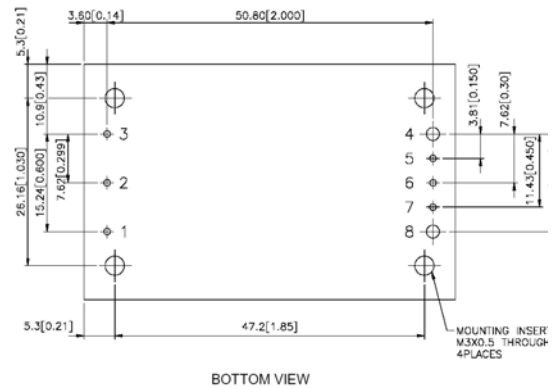
Top View



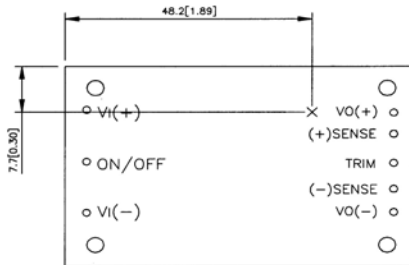
Side View



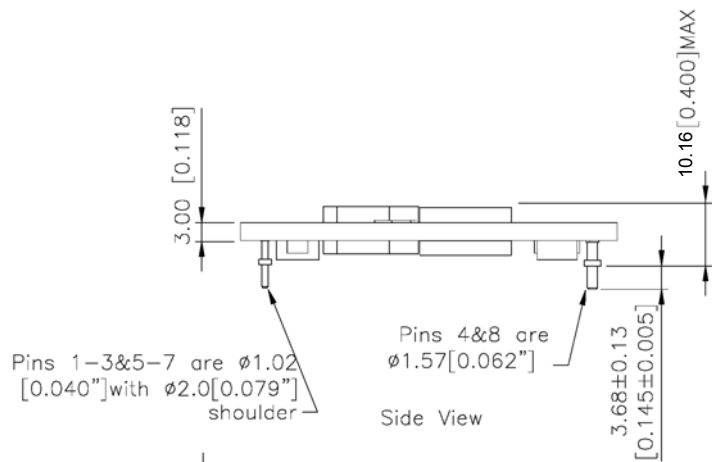
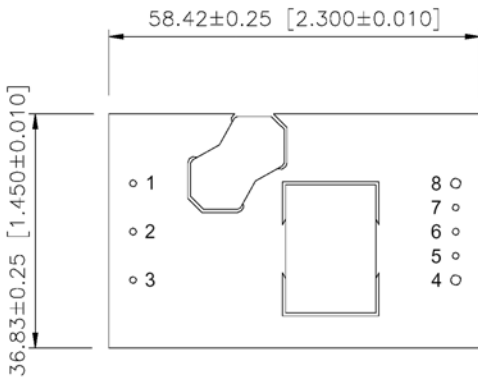
Bottom View



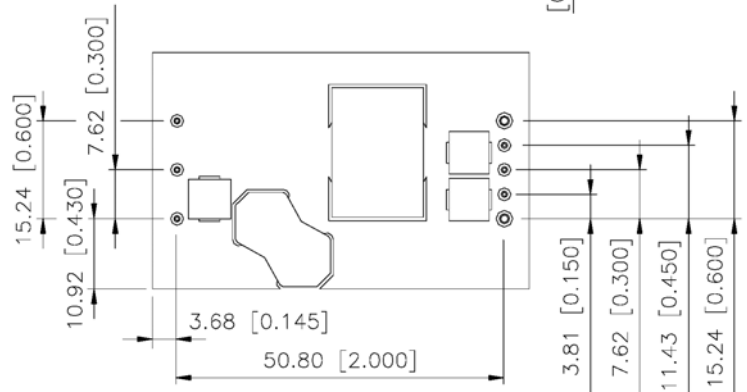
Note: Top view dimensions are in millimetres and [inches].  
Pin Locations for reference only



### Mechanical Outline 24Vi Non-Base Plate version



Side View



Dimensions are in millimetres and [inches]  
Tolerances: x.xmm +/- 0.5mm [x.xx in. +/- 0.02in  
x.xxmm +/- 0.25mm [x.xxx in. +/- 0.010in]

Exceeding absolute maximum ratings may cause permanent damage and may reduce reliability. Information and specifications contained in this data sheet are believed to be correct at the time of publication. However, APC accept no responsibility for consequences arising from printing errors or inaccuracies. Specifications are subject to change without notice